

## BBL HAIR REMOVAL

## BBL HAIR REMOVAL

## What can Laser Hair Removal do for you?

*"I love waking up in the morning knowing I don't have to shave, pluck, wax or bleach."*

T.S., MINNESOTA

*"No more razor cuts or burns on my sensitive skin"*

W.M., TENNESSEE

*"I used to dread summer clothes and swimsuits, now I look forward to warmer weather so I can wear them."*

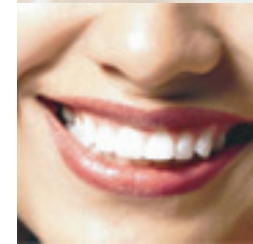
J.P., WASHINGTON

*"Now that the embarrassing facial hair is gone I can smile again with ease, and I'm happy to have my picture taken."*

R.M., CALIFORNIA

*For*

fast, easy removal of unsightly and unwanted hair.



# BBL HAIR REMOVAL

## The PROFILE™ BBL™ Broadband light brings a new approach to hair removal

### What is BBL?

BroadBand Light's innovative technology sets new standards for the treatment of unwanted hair. BBL broadband light energy allows your physician to selectively target microstructures such as hair follicles. Your treatment will be tailored to match your skin's condition and your desired results. Your skin will be protected by a unique contact cooling system that is adjusted to to a level appropriate for your skin type. The energy or "fluence", and the "pulsewidth", or the time over which the energy is applied, are also adjusted for your skin type to ensure the safest, most effective and most comfortable treatment.



### Can all skin colours be treated?

The BBL is suitable only for skin types I through V. Skin type I is very fair, always burns, never tans (usually red hair / blue eyes).

Skin type V is dark brown and tans easily (usually black hair and /brown eyes). Not recommended for type VI.

### Can tanned skin be treated?

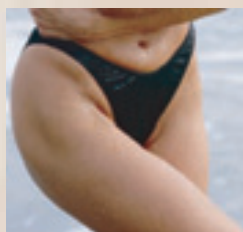
Tanned skin should not be treated. Always inform your physician if you have been tanning, using tanning products or exposed to the sun within the last three weeks. Your treatment regimen will be adjusted accordingly to give you the safest, most effective experience.

### What happens during hair removal treatment?

Your physician will discuss the treatment with you and decide if you need a topical anesthetic cream. The area of your skin that is to be treated will be covered with a coupling gel then scanned with BBL. Treatment time will depend upon the area to be treated. An integrated system for cooling your skin will be used to remove heat as it leaves the follicles and should ensure a comfortable treatment. However sensation varies from individual to individual, a topical anesthesia can be provided. Let your physician know if you are very sensitive.

### How does it work?

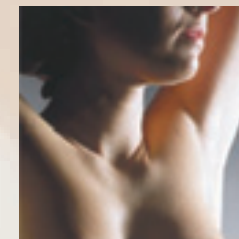
The BBL selectively targets your unwanted hair follicles and heats them with infrared energy. Unlike other epilation processes, BBL treats many hairs at once, making the treatment of large areas practical. BBL uses a specific wavelength, fluence, pulse-width and temperature to target the melanin in the hair follicles while sparing other structures in your skin.



Because hair is rooted so deeply in the skin, more energy is required to penetrate, heat and destroy the root structure. To protect the skin during this process, integrated contact cooling is applied for a safe, fast, effective and gentle treatment.

### What should I expect after my treatment?

Some redness and slight swelling may be present in the area that has been treated; however, this should subside within a few hours. If any prolonged redness or swelling occurs consult your physician. Keep the treated area clean, use at least SPF 15 sunscreen when outdoors, and follow physician instructions.



### How many treatments will I need?

You may need to be treated from 3 to 5 times at intervals of 3 to 8 weeks. There are three phases of hair growth - anagen, catagen, and telogen. Only hairs in the active growth phase, anagen, can be successfully treated.

### Will there be a risk of complications?

Temporary pigmentation changes are possible but seldom occur. Always discuss your concerns with your physician prior to your treatment.

### Can in-grown hair be treated?

The infrared energy delivered by BBL can be used to remove all types of hair. Sometimes "shaving bumps" can cover a follicle, but the penetrating light of the BBL can still be safely used.